

Pressure Window for WR137, 5.85–8.2 GHz, mates to CPR137G

## Product Classification

**Product Type** Rectangular waveguide, pressure window

## Electrical Specifications

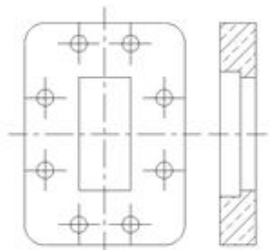
**Operating Frequency Band** 5.85 – 8.2 GHz

**VSWR** 1.01

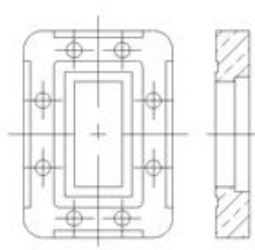
## General Specifications

**Component** Pressure Window  
**Waveguide Size** WR137 | WG14 | R70  
**Interface** CPR137F  
**Mates to Interface** CPR137G

### Interface



### Mates to Interface



## Regulatory Compliance/Certifications

**Agency** ISO 9001:2015  
**Classification** Designed, manufactured and/or distributed under this quality management system

