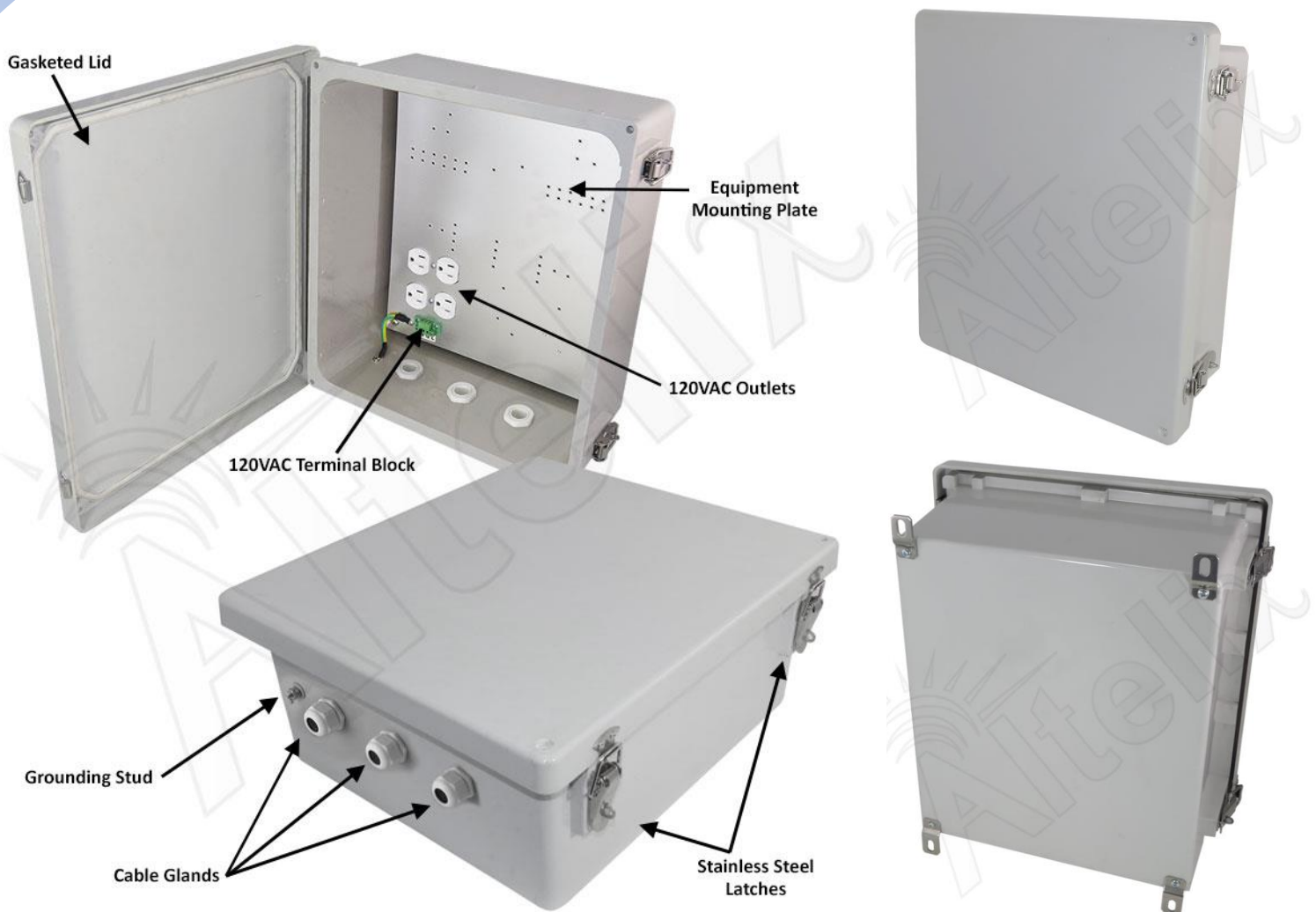


14x12x6 Fiberglass Weatherproof NEMA 4X Enclosure with Aluminum Equipment Mounting Plate and 120 VAC Outlets



Features

- (4) Pre-Wired 120VAC Outlets
- Removable 120VAC Terminal Block
- Aluminum Equipment Mounting Plate
- Stainless Steel Hinge and Quick Release Latches with Padlock Hasps
- Fiberglass Reinforced Polyester, FRP
- Weatherproof, UV Stable and Highly Corrosion Resistant
- Meets NEMA 1, 2, 4, 4X, 12, 13, and IP65, IP66
- Includes Cable Glands and Stainless Steel Mounting Feet
- RF Transparent Enclosure
- Pole Mounting Kit Available

Description

The **Altelix NF141206A1 NEMA 4X** Weatherproof Enclosure features four pre-wired 120VAC power outlets and a quick-connect terminal strip for easy wiring by a qualified installer. The finished aluminum equipment mounting plate features multiple tapped holes for equipment installation and can be easily drilled by the installer for unique application requirements.

Extreme Protection Built to Last

This rugged JIC style NEMA box is molded from durable UV stable and corrosion resistant fiberglass reinforced polyester (FRP) with a UL94-5V flame rating. The FRP material is dent-proof, non-conductive and RF transparent for compatibility with wireless equipment. It can be easily drilled and modified by the installer as needed. It features a gasketed door with stainless steel continuous hinge and stainless steel quick release latches with padlock hasps. The generous size of this enclosure accommodates a wide range of equipment.

Removable Terminal Block

This enclosure features our 120VAC top entry terminal block. It is easily removable which helps simplify on-site wiring. It can accept wires sizes from 12 to 18 AWG. The wires are secured by side terminal screws.

Specifications

Material	Fiberglass Reinforced Polyester
Color	Gray
Voltage	120VAC
Max Load	15A @ 120VAC
Terminal Block Wire Range	12-18 AWG
Terminal Block Wire Strip Length	6-7mm
Outer Dimensions	15.7 x 13.8 x 6.5 Inches (401 x 352 x 165 mm)
Inner Dimensions*	13.0 x 11.0 x 4.5 Inches (330 x 279 x 114 mm)
Mounting Plate Material	0.10 in (2.5 mm) Aluminum
Mounting Plate Dimensions	10.9 x 12.8 in. (276 x 324 mm)
Weight	10.4 lbs. (4.7 kg)
Ratings*	NEMA Type 4, 4X / IP66
Flame Rating	UL94-5V

*Notes

- 1) Enclosure ports must be properly sealed to maintain NEMA Type 4, 4X / IP66 rating.
- 2) See drawing for detailed dimensions of maximum space available for equipment.