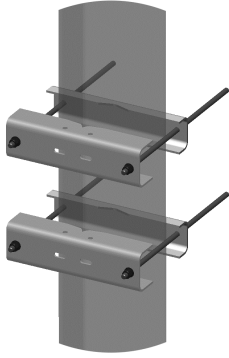


SM-U2080



Universal Saddle Mount for straight or tapered legs up to 8 in OD, 8 in angle 60°, or 6 in angle 90°

Product Classification

Product Type Saddle mount

Dimensions

Height 152.4 mm | 6.0 in
Length 254.0 mm | 10.0 in
Mounting Diameter, maximum 203.2 mm | 8 in
Mounting Diameter, minimum 0.0 mm | 0 in
Weight 22.7 kg | 50.0 lb
Width 279.4 mm | 11.0 in

General Specifications

Includes Mount
Material Type Hot dip galvanized steel
Mounting Angle 60°, 203.2 mm (8 in) | Angle 90°, 152.4 mm (6 in) | Straight or tapered legs up to 203.2 mm (8 in) OD
Package Quantity 2
Tower Taper Non-tapered

Regulatory Compliance/Certifications

Agency ISO 9001:2015
Classification Designed, manufactured and/or distributed under this quality management system

