

CABLE GLAND INSTRUCTIONS

SEAVIEW

For Cable Gland Part Numbers

CG20PG
CG20SB
CG20SS

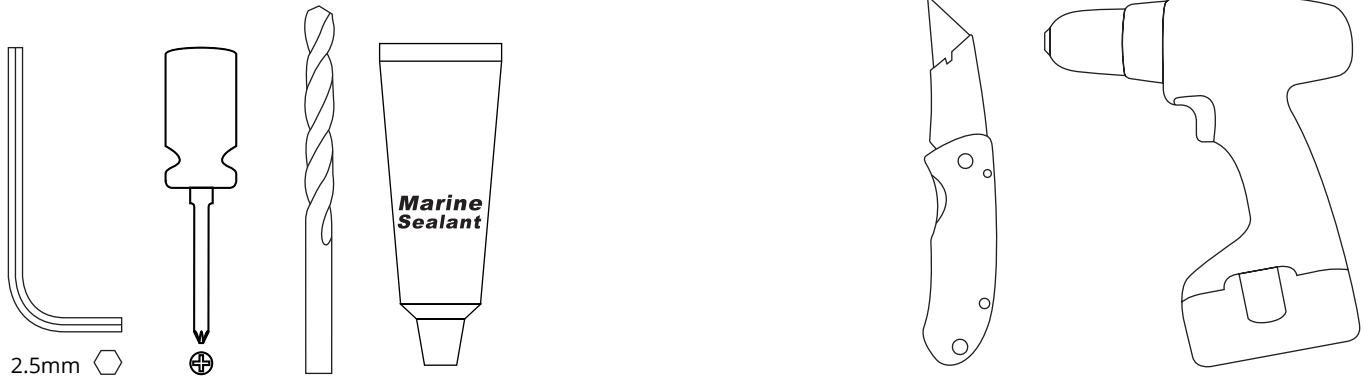
CG30PG
CG30SB
CG30SS

CGM17PG
CGM17SB
CGM17SS

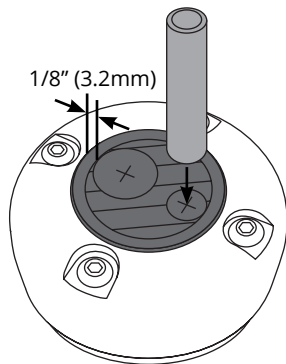
Refer to website for most up to date instructions and videos.

www.seaviewglobal.com

TOOLS NEEDED

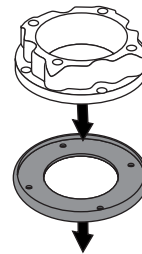


BEFORE YOU BEGIN



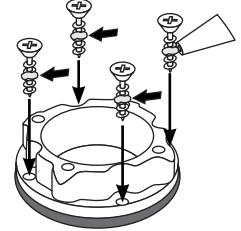
- It is not necessary to dry fit if using drill tubes. Dry fit is recommended if using a drill bit to securely hold the rubber in place.
- Make sure that you do not drill within 1/8" (3.2mm) from the edge of the tapered plug.
- Drill tube is recommended. However, if using a drill bit, a slightly larger drill bit is needed for drilling the rubber.

1



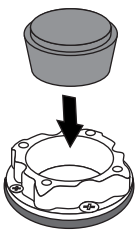
Place the plastic base onto the rubber base gasket. Be sure to line up the four screw holes.

2



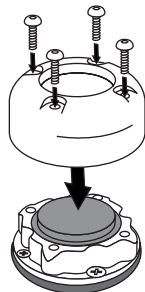
Drill pilot holes and secure the base. Apply marine sealant to the threads of the screws.

3



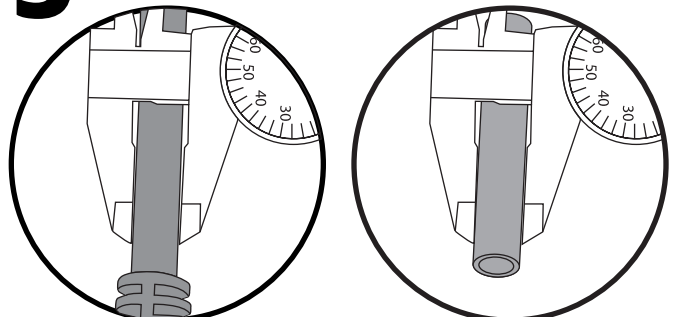
Insert the rubber tapered plug into the base.

4



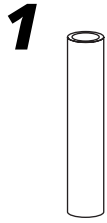
Line up the Cable Gland cover with the four holes in the plastic base and screw the bolts in with a 2.5mm wrench, compressing the rubber plug.

5



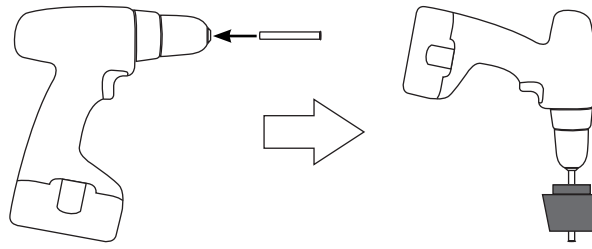
Measure your cable diameter and select the appropriate drill tube provided. Cable diameter $+0.01/-0.03$

6A



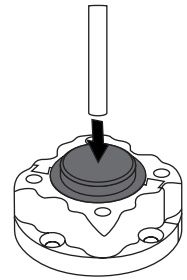
Take one of the four drill tubes (included with the Cable Gland). Double check to make sure the tube is the right diameter for your installation.

2



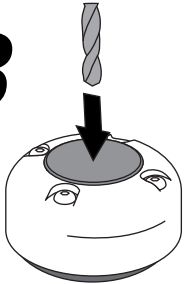
Insert drill tube into drill motor, and leave enough length to get through the tapered plug.

3



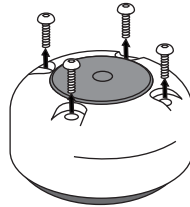
Apply small amount of soapy water to the tube and slowly drill the rubber plug.

6B



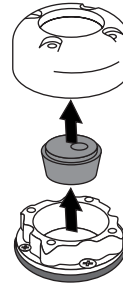
If using a drill bit, the cover should be securely tightened to help hold the rubber while drilling. The drill bit should be run repeatedly through the rubber.

7



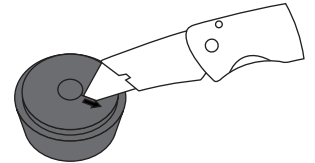
Remove the four screws using a 2.5 mm allen wrench.

8



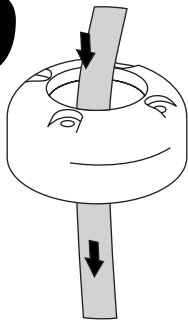
Remove the Cable Gland cover and tapered plug.

9



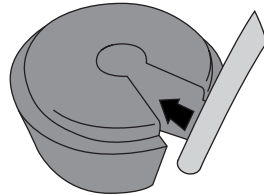
Using a sharp razor blade or knife, cut the tapered plug from the cable hole outward.

10



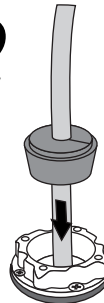
Slide the Cable Gland cover over the electronic cable.

11



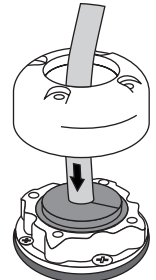
Wrap the tapered plug around the electronic cable.

12



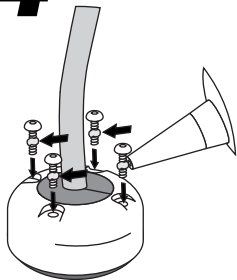
Insert the electronic cable and tapered plug into the plastic base.

13



Slide the Cable Gland cover onto the plastic base making sure that all four bolt holes line up.

14



Apply marine sealant to the four allen head screws and tighten.

SEAVIEW

800-655-7922
www.seaviewglobal.com

10-052020